

SECTIONS 34, 35, & 36, T.6N., R.1E., S.L.B. & M.

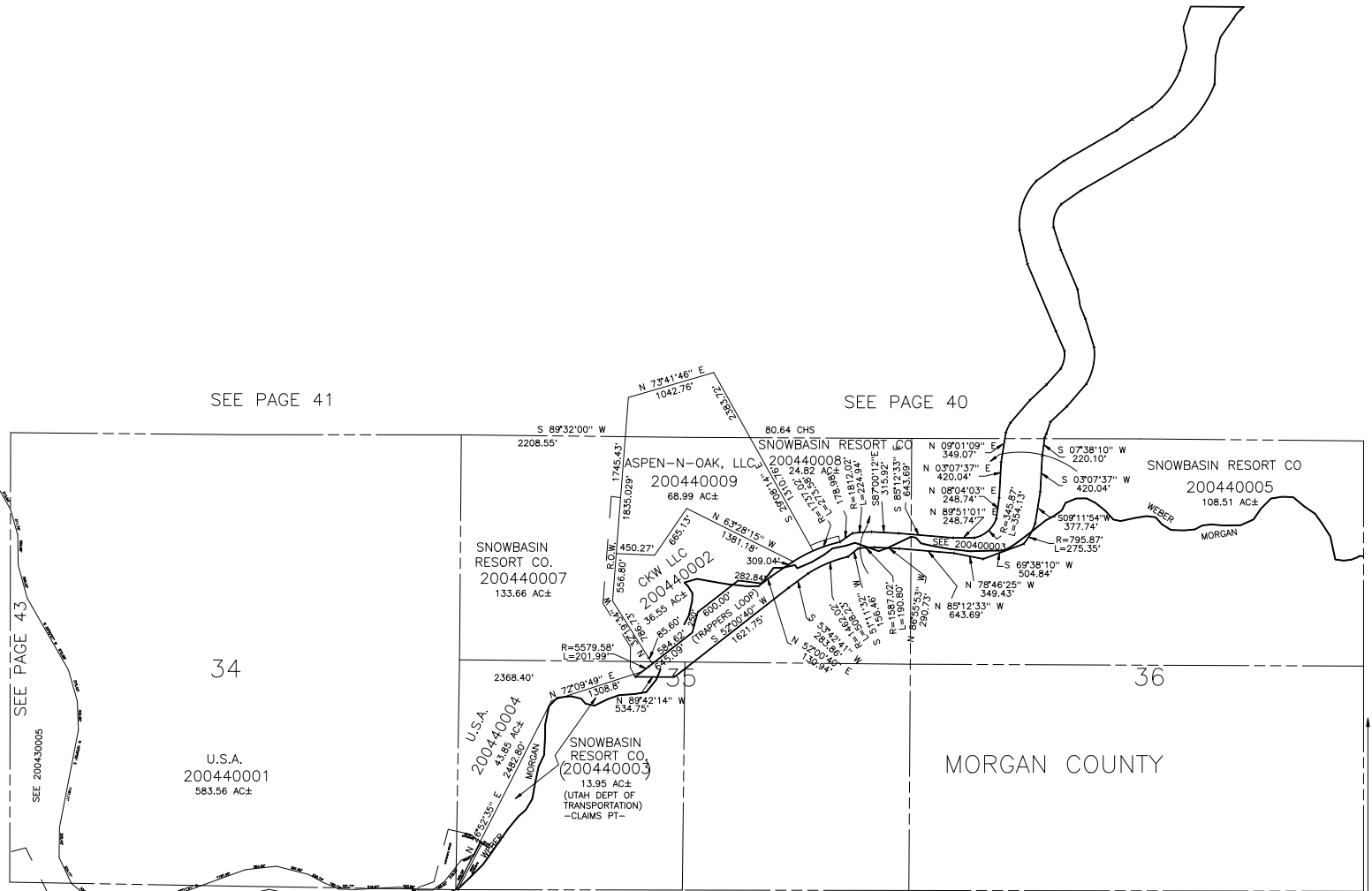
WEBER COUNTY

SCALE 1" = 1000'

TAXING UNIT: 318

SEE PAGE 41

SEE PAGE 40



SEE PAGE 43
SEE 200430005

SEE BOOK 23
PAGE 2

NOTE: WEBER/MORGAN ASSESSMENT LINE
CHANGED TO COUNTY LINE - 1998

SEE
BOOK
21
PAGE
40

OGDEN VALLEY NATURAL GAS IMPROVEMENT DISTRICT